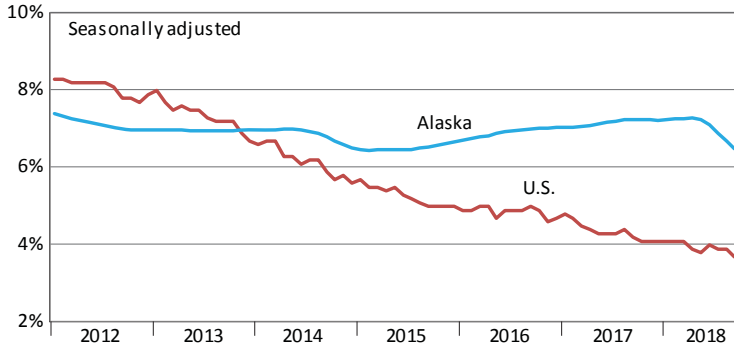


Unemployment Rates, Alaska and U.S.

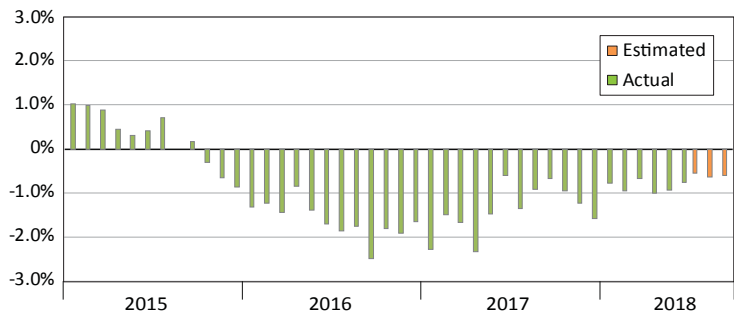
January 2012 to Sep 2018



Sources: Alaska Department of Labor and Workforce Development, Research and Analysis Section; and U.S. Bureau of Labor Statistics

Wage and Salary Employment

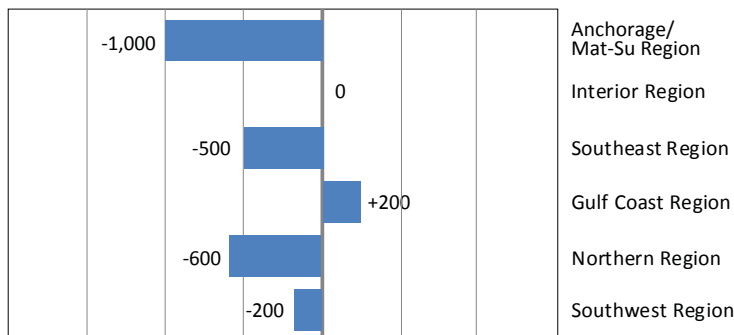
Percent change from same month the previous year



Source: Alaska Department of Labor and Workforce Development, Research and Analysis Section

Regional Employment

Sep 2018, change from Sep 2017



Source: Alaska Department of Labor and Workforce Development, Research and Analysis Section

Area Unemployment Rates

Not seasonally adjusted¹

	Rate		
	9/18 ^P	8/18	9/17
Alaska	5.6	5.4	6.6
Anchorage/Mat-Su Region	5.3	5.1	6.4
Anchorage, Municipality	4.9	4.7	5.9
Matanuska-Susitna Borough	6.4	6.4	7.9
Gulf Coast Region	5.8	5.3	6.8
Kenai Peninsula Borough	6.2	5.8	7.5
Kodiak Island Borough	4.7	4.5	4.7
Valdez-Cordova Census Area	5.0	4.0	5.7
Interior Region	5.3	4.9	6.4
Denali Borough	3.1	2.6	4.0
Fairbanks North Star Borough	4.9	4.4	5.9
Southeast Fairbanks Census Area	7.6	7.5	8.5
Yukon-Koyukuk Census Area	12.3	13.0	15.4
Northern Region	9.7	10.6	11.3
Nome Census Area	9.8	11.8	11.1
North Slope Borough	7.0	6.6	8.0
Northwest Arctic Borough	12.7	14.0	15.2
Southeast Region	4.6	4.2	5.3
Haines Borough	5.8	5.2	6.1
Hoonah-Angoon Census Area	6.6	6.7	7.5
Juneau, City and Borough	3.9	3.5	4.5
Ketchikan Gateway Borough	4.7	4.1	5.1
Petersburg Borough	6.4	5.9	7.8
Prince of Wales-Hyder CA	8.6	8.4	9.5
Sitka, City and Borough	3.6	3.0	4.3
Skagway, Municipality	3.1	2.6	3.7
Wrangell, City and Borough	5.2	4.7	6.7
Yakutat, City and Borough	6.4	7.3	8.0
Southwest Region	8.8	8.8	9.8
Aleutians East Borough	2.3	1.6	2.3
Aleutians West Census Area	3.4	2.8	4.9
Bethel Census Area	11.6	13.1	13.1
Bristol Bay Borough	5.2	3.6	6.1
Dillingham Census Area	7.4	5.9	8.9
Kusilvak Census Area	15.9	17.9	16.2
Lake and Peninsula Borough	9.0	8.9	9.3

P = Preliminary. As more information becomes available, data are revised every month for the previous month and again at the end of every calendar year.

Note: The official definition of unemployment excludes anyone who has not made an active attempt to find work in the four-week period up to and including the week that includes the 12th of the reference month.

¹Unemployment rates that are not seasonally adjusted should not be compared with those that are.

Sources: Alaska Department of Labor and Workforce Development, Research and Analysis Section; and U.S. Bureau of Labor Statistics

Employment By Industry

	Average Monthly Employment			Compared to Sep 2017	
	Sep 2018	Aug 2018	Sep 2017	Change	Percent
Total Nonfarm Employment	338,200	348,600	340,200	-2,000	-0.6%
Total Private	257,200	272,100	258,700	-1,500	-0.6%
Mining and Logging	12,800	13,000	13,200	-400	-3.0%
Oil and Gas	9,300	9,400	9,700	-400	-4.1%
Construction	17,500	18,400	17,300	200	1.2%
Manufacturing	14,100	20,500	14,300	-200	-1.4%
Trade, Transportation and Utilities	66,500	68,800	67,100	-600	-0.9%
Wholesale	6,400	6,500	6,400	0	0%
Retail	36,000	36,800	36,900	-900	-2.4%
Transportation, Warehousing and Utilities	24,100	25,500	23,800	300	1.3%
Information	5,600	5,700	5,900	-300	-5.1%
Financial Activities	11,700	12,300	11,900	-200	-1.7%
Professional and Business Services	28,000	28,600	28,500	-500	-1.8%
Education and Health	50,100	50,400	49,600	500	1.0%
Health Care	38,000	38,300	37,400	600	1.6%
Leisure and Hospitality	39,800	43,300	39,700	100	0.3%
Other Services	11,100	11,100	11,200	-100	-0.9%
Total Government	81,000	76,500	81,500	-500	-0.6%
Federal ¹	15,500	15,600	15,400	100	0.6%
State ²	23,900	23,000	24,100	-200	-0.8%
Local ³	41,600	37,900	42,000	-400	-1.0%

¹Excludes uniformed military

²Includes the University of Alaska

³Includes public schools and tribal government

Source: Alaska Department of Labor and Workforce Development, Research and Analysis Section